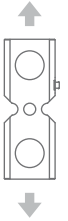




Manufactured according to OIML R60 standards

Capacity from 30000 kg to 250000 kg

- 17-4 PH STAINLESS STEEL
- HOLES FOR STANDARD SHACKLES
- COMBINED ERROR $\leq \pm 0.08\%$
- PROTECTION CLASS IP68



CAPACITY	kg	IECEx	Ex	EAC	NET WEIGHT OF LOAD CELL (kg)	CODE
30000		•	•	•	-	TBT30
40000		•	•	•	-	TBT40
50000		•	•	•	-	TBT50
60000		•	•	•	-	TBT60
100000		•	•	•	-	TBT100
250000		•	•	•	-	TBT250

ON REQUEST

CERTIFICATIONS

CERTIFICATIONS ON REQUEST

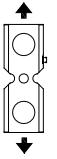
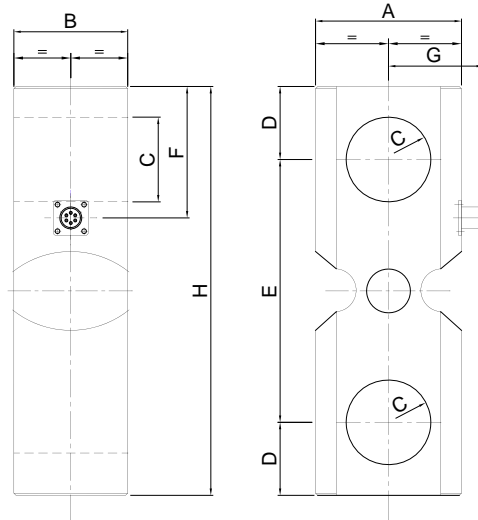
✓	Calibration report (ACCREDIA SIT traceability)
Ex	ATEX II 1GD (zone 0-1-2-20-21-22)
IECEx Ex	IECEx II 1GD (zone 0-1-2-20-21-22)
EAC	Complies with the Eurasian Custom Union regulations (Russia, Belarus, Kazakhstan)

OPTIONS ON REQUEST

DESCRIPTION

Two redundant strain gauges Wheatstone bridges (350 Ω) with two output cables; for dual safety systems

DIMENSIONS (mm)



	kg 30000	kg 40000	kg 50000	kg 60000	kg 100000	kg 250000
A	100	127	127	127	240	240
B	78	88	88	88	110	110
C	Ø 58	Ø 71	Ø 71	Ø 71	Ø 102	Ø 102
D	50	70	70	70	120	120
E	180	200	200	200	360	360
F	90	120	120	120	185	185
G	65	68	68	68	136	136
H	280	340	340	340	600	600

TECHNICAL FEATURES

Material	17-4PH stainless steel		
Nominal load (E max)	30000 - 40000 - 50000 - 60000 - 100000 - 250000 kg		
Combined error	≤ ±0.08%		
Protection class	IP68		
Rated output	1.0 mV/V ±0.1%	Input resistance	350 Ω ±20
Temperature effect on zero	0.005% °C	Output resistance	350 Ω ±5
Temperature effect on span	0.005% °C	Zero balance	±1%
Compensated temperature range	-10 °C / +50 °C	Insulation resistance	>5000 MΩ
Operating temperature range	-20 °C / +70 °C	Safe overload (% of full scale)	150%
Creep at nominal load in 30 minutes	0.03%	Ultimate overload (% of full scale)	300%
Max supply voltage without damage	15 V	Deflection at nominal load	0.3 mm

ELECTRICAL CONNECTIONS

Cable length	10 m
Cable diameter	6 mm
Cores	4/6 x 0.14 mm ²

