

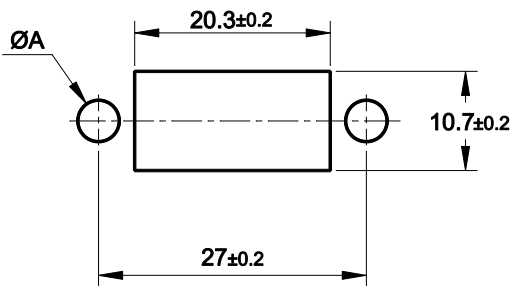
SOLDER CUP FOR #20AWG WIRE SIZE
FÔTS À SOUDER POUR FIL TAILLE #20AWG

Applicable relays:

Series F250, F257, W260, GP5, 144



**MOUNTING HOLE LAYOUT
DECOUPE DE LA STRUCTURE**

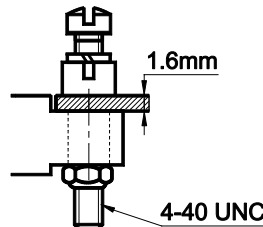


A = 4.3 ± 0.1 BOTTOM MOUNTING
MONTAGE SOUS STRUCTURE

= 3.2 ± 0.1 TOP MOUNTING
MONTAGE SUR STRUCTURE

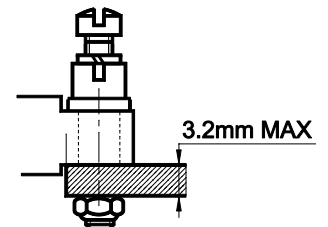
**BOTTOM MOUNTING
MONTAGE SOUS STRUCTURE**

HRCW-1JV2



**TOP MOUNTING
MONTAGE SUR STRUCTURE**

HRCW-22JV2



**GENERAL CHARACTERISTICS
CARACTERISTIQUES GENERALES**

Temperature range / Température d'utilisation	-65° C to +125° C.
Weight / Masse	10g max.
Dielectric Strength at sea level / Rigidité diélectrique au niveau de la mer	1500 Vrms / 50Hz minimum
Supplied with mounting Hardware / Fourni avec visserie de montage	Recommended torque : 0,45 Nm
Meets the requirements of / répond à	MIL-DTL-12883
Gold plated contacts per / Contacts dorés selon	MIL-G-45204
Diallyl phthalate, glass-fiber filled per MIL-M-14 Diallyl phthalate, chargé en fibre de verre selon MIL-M-14	

LEACH INTERNATIONAL EUROPE S.A.S.

Tel: +33 3 87 97 98 97

Fax: +33 3 87 97 96 86

LEACH INTERNATIONAL ASIA PACIFIC

Tel: +852 2 191 3830

Fax: +852 2 389 5803

The technical information provided by Leach International Europe is to be used as a guide only, and is not meant for publication or as documentation for altering any existing specification. Dimensions are in millimeters unless otherwise specified. Rev. 06/2019.