

SC30*, SC40*

RELAY SOCKET FOR 2 OR 4 POLE, 10 AMPS SOCLE POUR RELAIS 2 OU 4 POLE, 10 A

LEACH
INTERNATIONAL
EUROPE



Applicable relays:

SERIES M300, M301, M302,
M400, M401, M402, T412, T441

• Designed to the standards and requirements of:

Conforme aux exigences des normes et spécifications:

2-pole, 10A relays

Mates with / Modèles compatibles

4-pole, 10A relays

Mates with / Modèles compatibles

MIL-PRF-12883/41

M83536, M83726 and MS27709

MIL-PRF-12883/40

M83536

PRINCIPAL TECHNICAL CHARACTERISTICS CARACTERISTIQUES TECHNIQUES PRINCIPALES

• Low profile

Bas profil

• Bottom panel mount

Montage sur panneau

• Snaps into panel

Encliquetable sur panneau

• Special models available upon request

Modèles spécifiques sur demande

MATERIALS MATERIAUX

• Socket body:

Corps

Polyetherimide per MIL-P-46184

• Grommet:

Joint d'étanchéité

Silicone rubber per ZZ-R-765

• Hardware:

Visserie

Stainless Steel

• Contacts:

Contacts

Copper alloy, hard gold plated per MIL-G-45204

• Contact retainers:

Clips de retenu

Beryllium copper

GENERAL CHARACTERISTICS CARACTERISTIQUES GENERALES

Insulation resistance <i>Résistance d'isolement</i>	1000 M W min.
Dielectric withstanding voltage <i>Rigidité diélectrique</i>	1500 VRMS sea level; 500 VRMS at 25,000 m
Weight <i>Masse</i>	15.3g max.
Temperature range <i>Gamme de température</i>	-65°C to +125°C
Vibration <i>Vibration</i>	MIL-STD-202, Method 204, Test Condition G
Shock <i>Chocs</i>	MIL-STD-202, Method 213, Test Condition C

LEACH INTERNATIONAL EUROPE S.A.S.

Tel: +33 3 87 97 98 97

Fax: +33 3 87 97 96 86

LEACH INTERNATIONAL ASIA PACIFIC

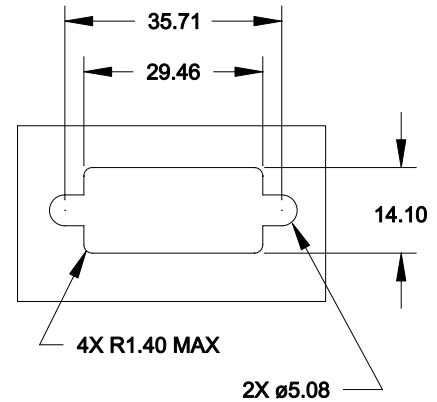
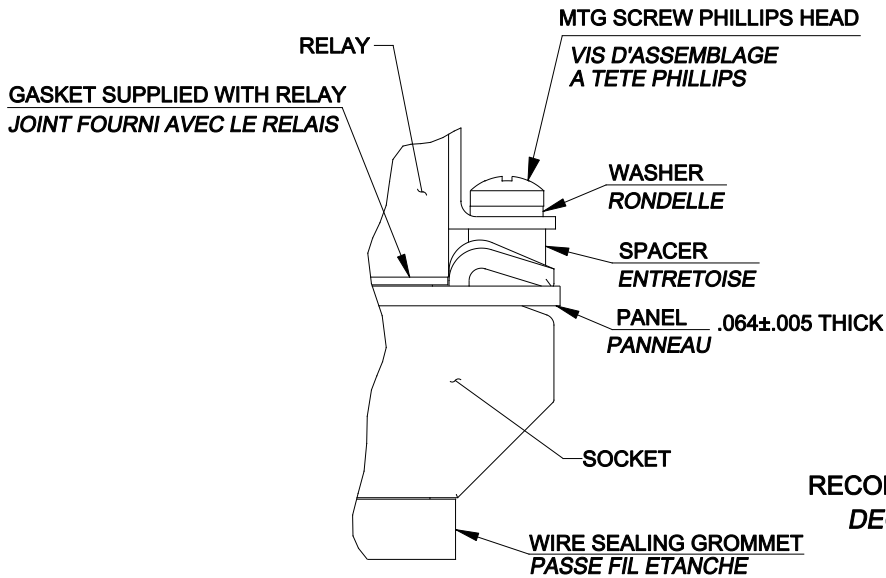
Tel: +852 2 191 3830

Fax: +852 2 389 5803

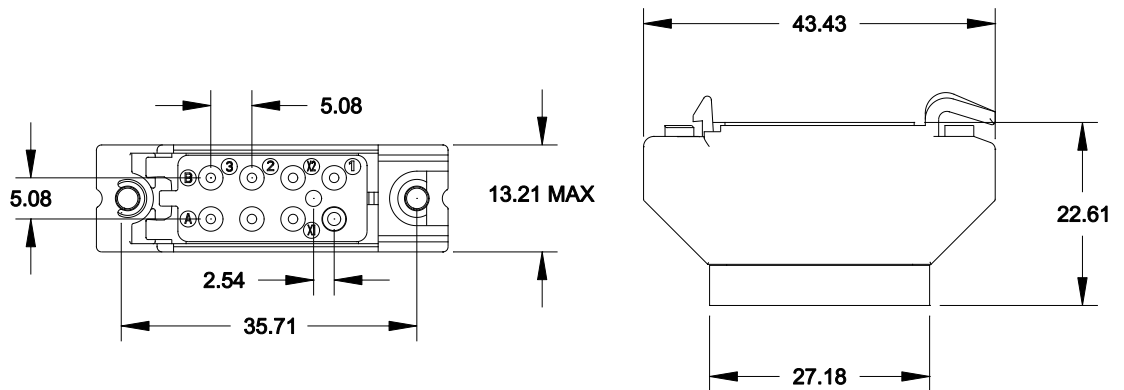
The technical information provided by Leach International Europe is to be used as a guide only, and is not meant for publication or as documentation for altering any existing specification. Dimensions are in millimeters unless otherwise specified. Rev. 06/2019.

Dimensions in mm
Tolerances, unless otherwise specified, $\pm 0.25\text{mm}$

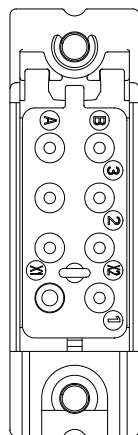
TERMINAL LAYOUT (2 POLE)
TYPE DE SORTIE (2 POLES)



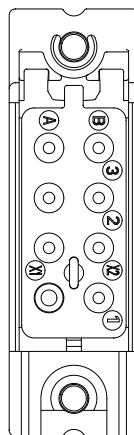
RECOMMENDED MOUNTING PANEL CUTOUT
DECOUPE DE PANNEAU CONSEILLEE



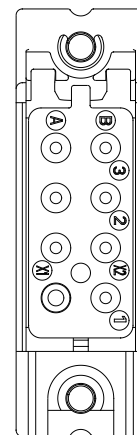
TERMINAL LAYOUT (2 POLE)
TYPE DE SORTIE (2 POLES)



SC301-2

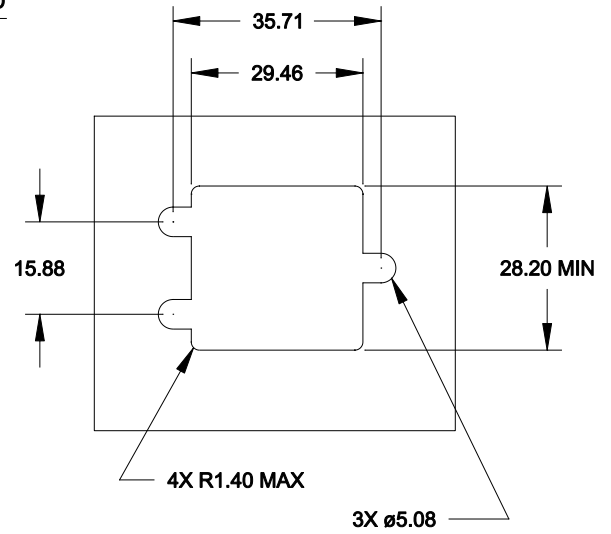
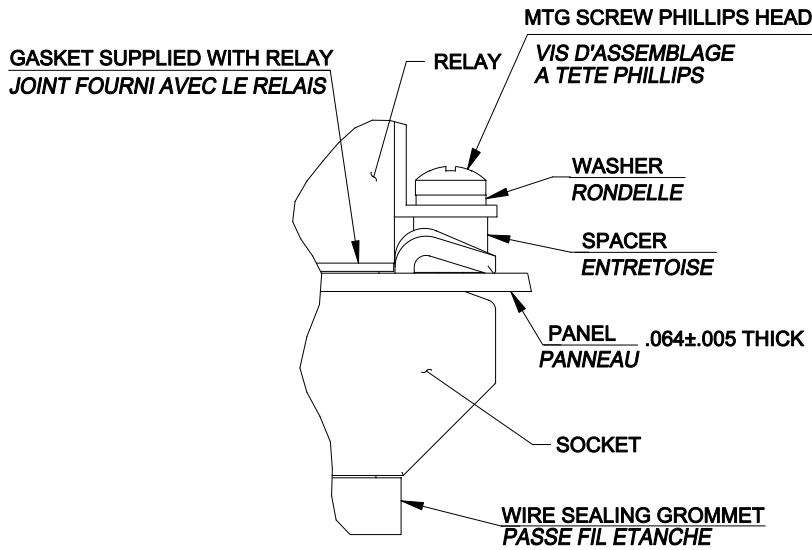


SC301-1

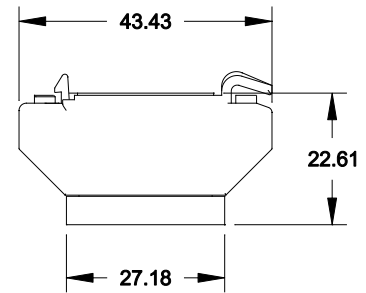
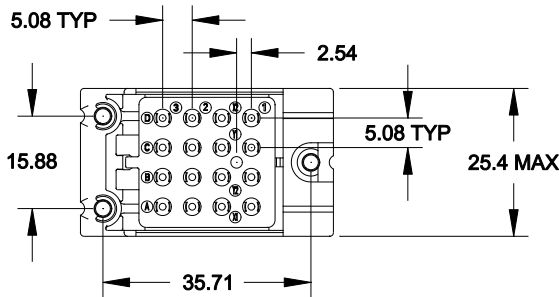


SC300

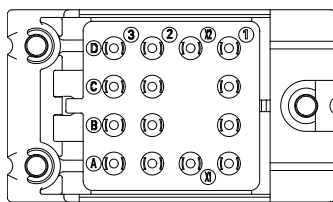
TERMINAL LAYOUT (4 POLE)
TYPE DE SORTIE (4 POLES)



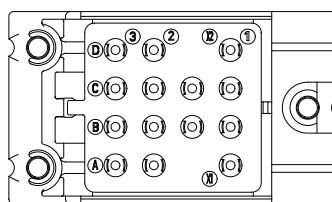
RECOMMENDED MOUNTING PANEL CUTOUT
DECOUPE DE PANNEAU CONSEILLEE



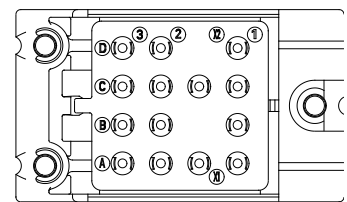
TERMINAL LAYOUT (4 POLE)
TYPE DE SORTIE (4 POLES)



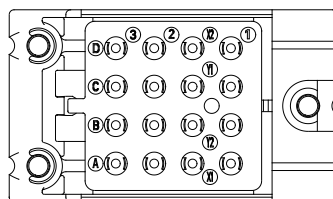
SC400



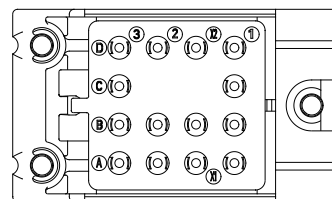
SC401-1



SC401-2



SC402



SCTDX-1

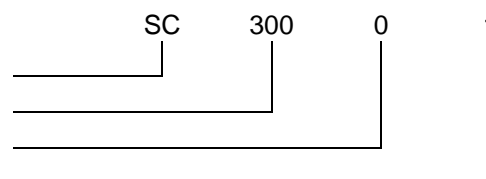
SC30*,
SC40*

RELAY SOCKET FOR 2 OR 4 POLE, 10 AMPS
SOCLE POUR RELAIS 2 OU 4 POLE, 10 A

SOCKET NUMBERING SYSTEM SYSTEME DE REFERENCES

Basic socket snap lock designation | *Socle de base encliquetable*

1. **Mating relay** | *type de relais*
2. **Hardware** | *Visserie (0=sans visserie, 1=avec visserie)*
3. **Contacts** | *Contacts (0=sans contacts, 1=avec contacts)*



Exemple : SC3001