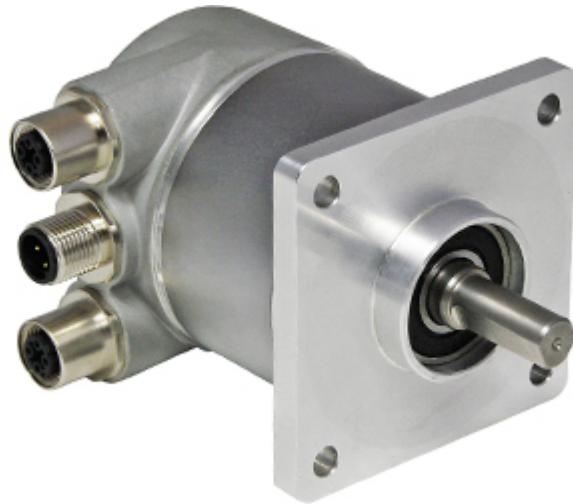




### IXARC Absolute Rotary Encoder

**OCE-EIB1B-0016-Z10W-HFG**



#### Interface

Interface	Profinet
Profile	Profidrive Profile 4.x, Encoder Profile 4.x
Diagnostics	Memory
Features	Boot-Loader, Round Axis, Flashing LEDs
Transmission Rate	10 / 100 Mbit
Interface Cycle Time	≥ 1 ms
Programming Functions	Resolution, time base and filter for velocity, preset, counting direction, IP-Address

#### Outputs

Output Driver	Ethernet
---------------	----------

#### Electrical Data

Supply Voltage	10 - 30 VDC
Current Consumption	≤ 230 mA @ 10 V DC, ≤ 100 mA @ 24 V DC
Power Consumption	≤ 2.5 W
Start-Up Time	< 1 s
Reverse Polarity Protection	Yes
Short Circuit Protection	Yes
EMC: Emitted Interference	DIN EN 61000-6-4
EMC: Noise Immunity	DIN EN 61000-6-2

Data Sheet

Printed at 19-09-2019 13:09

# POSITAL

## FRABA



MTTF 65 years @ 40 °C

### Sensor

Technology	Optical
Resolution Singleturn	16 bit
Accuracy (INL)	$\pm 0.0220^\circ$ (14 - 16 bit), $\pm 0.0439^\circ$ ( $\leq 13$ bit)
Code	Binary

### Environmental Specifications

Protection Class (Shaft)	IP66/IP67
Protection Class (Housing)	IP66/IP67
Operating Temperature	-40 °C (-40 °F) - +70 °C (+158 °F)
Storage Temperature	-40 °C (-40 °F) - +85 °C (+185 °F)
Humidity	98% RH, no condensation

### Mechanical Data

Connection Cap Material	Stainless Steel V4A (1.4404; 316 L)
Housing Material	Stainless Steel V4A (1.4404, 316 L)
Housing Coating	No Coating
Flange Type	Square, $\square$ 80 mm, ATEX
Flange Material	Stainless steel V4A (1.4404, 316 L)
Shaft Type	Solid, Single Flat, Length = 20 mm
Shaft Diameter	$\varnothing$ 10 mm (0.39")
Max. Shaft Load	Axial 50 N, Radial 50 N
Rotor Inertia	$\leq 35$ gcm <sup>2</sup> [ $\leq 0.2$ oz-in <sup>2</sup> ]
Friction Torque	$\leq 3$ Ncm @ 20 °C (4.2 oz-in @ 68 °F)
Max. Permissible Mechanical Speed	$\leq 3000$ 1/min
Shock Resistance	$\leq 100$ g (half sine 11 ms, EN 60068-2-27)
Vibration Resistance	$\leq 10$ g (10 Hz - 2000 Hz, EN 60068-2-6)
Length	150 mm (5.91")
Weight	4175 g (9.20 lb)

### Electrical Connection

Connection Orientation	Radial
Connection Type	2 x Blind Plug, Axial

### Product Life Cycle

Data Sheet  
Printed at 19-09-2019 13:09



Product Life Cycle

Established

Approval

CE + ATEX Zone 1 & 21 (Oil+Gas)

### Connection Plan

---

Connector-View on Encoder

### Dimensional Drawing

[2D Drawing](#)

### Accessories

Explosion Proof Accessories

Ex-Proof Blind Plug- M20x1.5 V4A

Ex-Proof Cable Gland- M20x1.5 V4A (6.5-8mm)

Ex-Proof Cable Gland- M20x1.5 V4A (8-10mm)

Ex-Proof Cable Gland- M20x1.5 V4A (10-11.5mm)

More

### Contact



Contact Us

The picture and drawing are for general presentation purposes only. Please refer to the "Download" section for detailed technical drawings. All dimension in [inch] mm. © FRABA B.V., All rights reserved. We do not assume responsibility for technical inaccuracies or omissions. Specifications are subject to change without notice.

Data Sheet

Printed at 19-09-2019 13:09